

CES-Staff WIFI Instructions- MAC

Before starting with Step 1, make sure you have disconnected from any WIFI connection and your WIFI is on.

1. From your device, open a browser and go to the following URL or use the QR Code

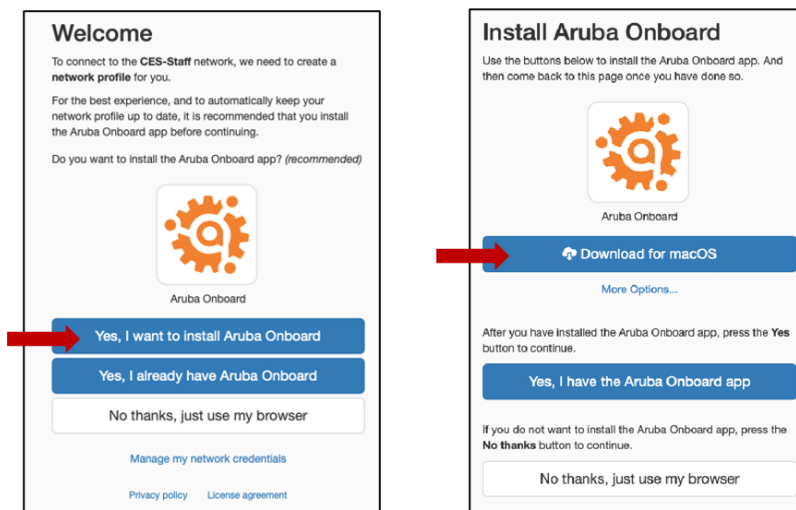
<https://wifi.uada.edu>



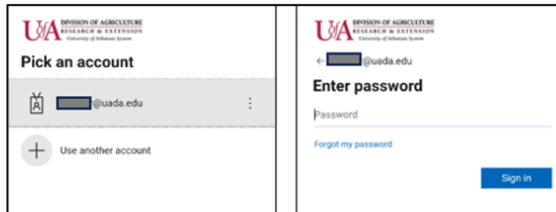
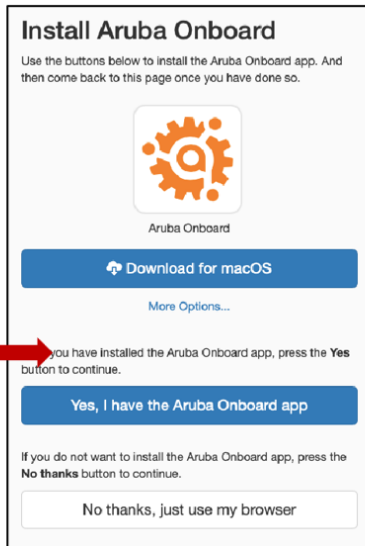
2. Choose “Yes, I want to install Aruba Onboard”

Note: If you choose not to install the app, you will be required to go to this website each time and choose “No thanks, just use my browser”.

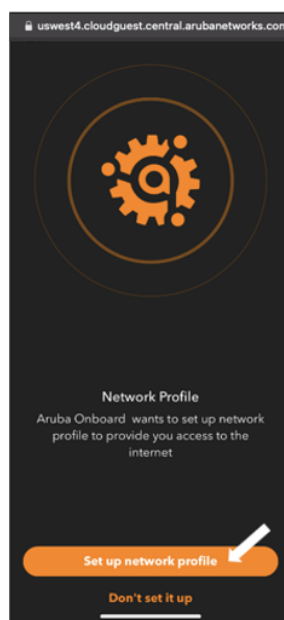
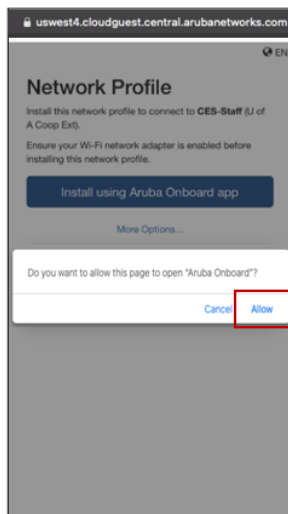
3. Choose “Download for macOS”



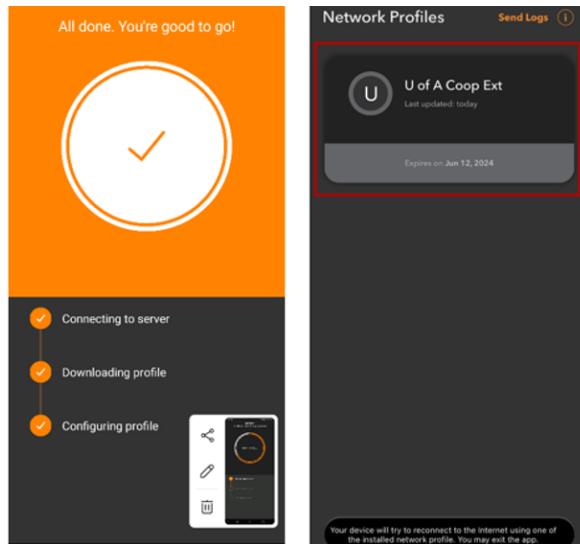
4. After installation of the app, open it.
 - a. Make sure you choose “Allow” when asked.
5. At the **Install Aruba Onboard** screen, click on **Continue**.
 - a. **Agree** to the license terms.
 - b. Enter your computer credentials, then click on **Install Software**.
 - c. Click on **OK** to install passpoint profile.
 - d. Allow Accessibility – click on **Open System Preferences, Security & Privacy** preferences.
6. Go back to your browser and choose “Yes, I already have Aruba Onboard”.
7. Login using your UADA AD credentials (username@uada.edu and password).



8. You will now be asked to set up a Network Profile.
9. Choose "Install using Aruba Onboard app".
10. Choose "Allow" to Open in Aruba Onboard.
11. The Aruba Onboard app opens, choose "Set up network profile".



12. Once your profile has been created you are done registering your device.



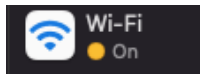
13. Go to **Settings**.



14. Choose Network from the options.



15. Select **Wi-Fi** on the left.



16. Select **CES-STAFF** from the list of available networks.

17. CES-Staff should automatically connect.

If it doesn't connect and prompts for additional information, contact the [helpdesk](#) for assistance.