

CES-Staff WIFI Instructions – Windows PC

Note: If you haven't installed the App yet, and you are on campus, you will need to temporarily connect to the CES-Guest WIFI network to download and install the app. Once you get it installed, start with Step 1.

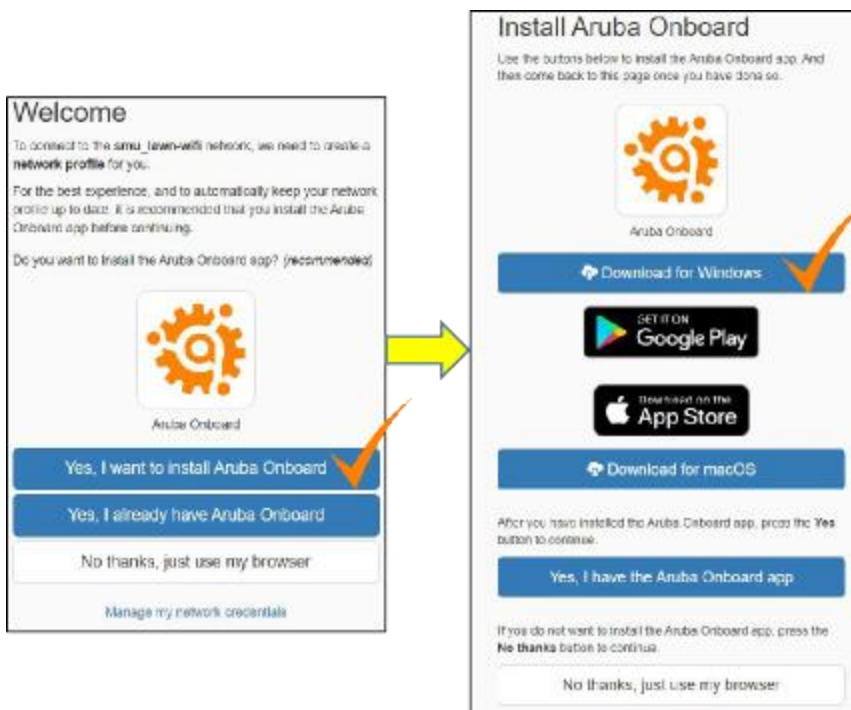
Before starting with Step 1, make sure you have disconnected from any WIFI connection and your WIFI is on.

1. From your device, open a browser and go to the following URL or use the QR Code

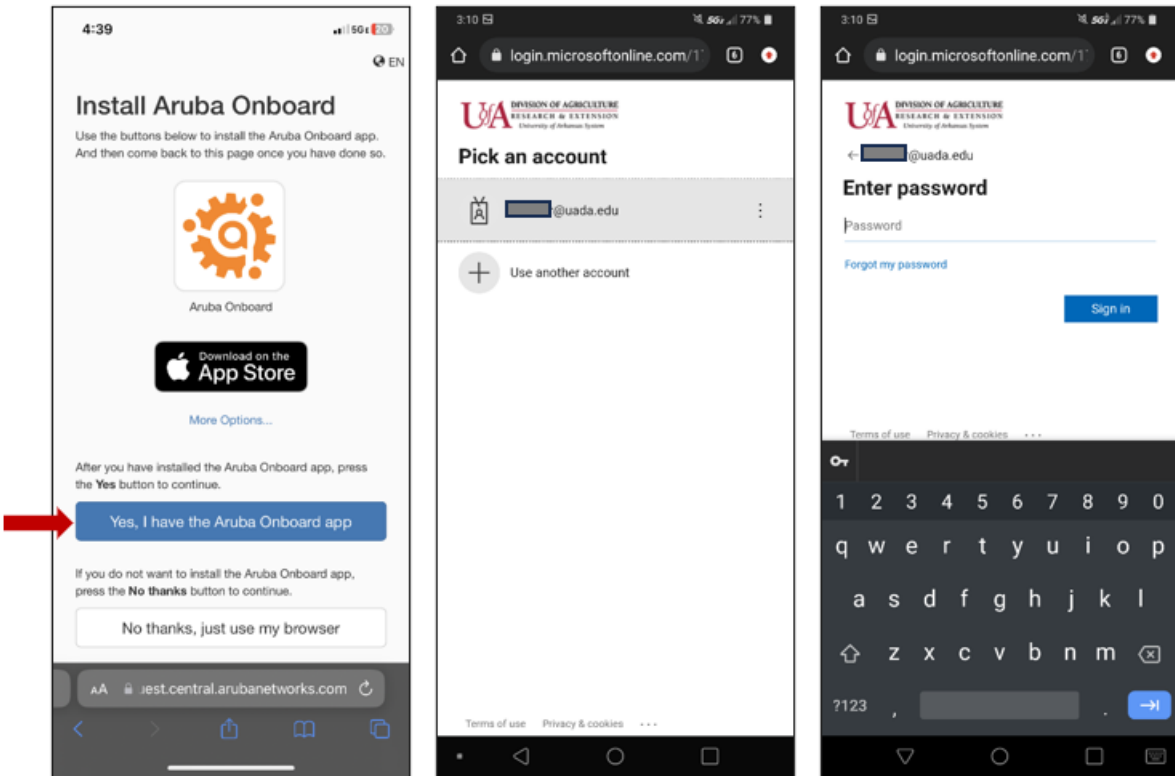
<https://wifi.uada.edu>



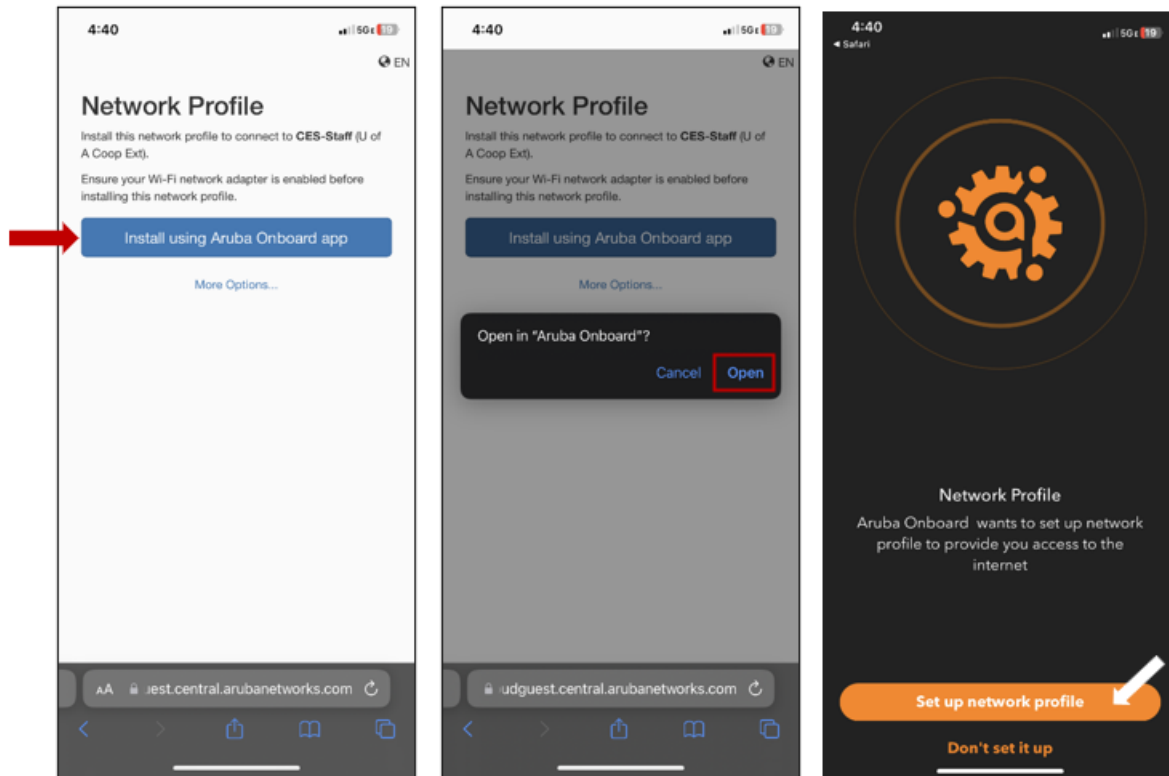
2. Choose “Yes, I want to install Aruba Onboard”
Note: If you choose not to install the app, you will be required to go to this website each time and choose “No thanks, just use my browser”.
3. Choose Download for Windows. Once the program is downloaded, double-click the file to install it.



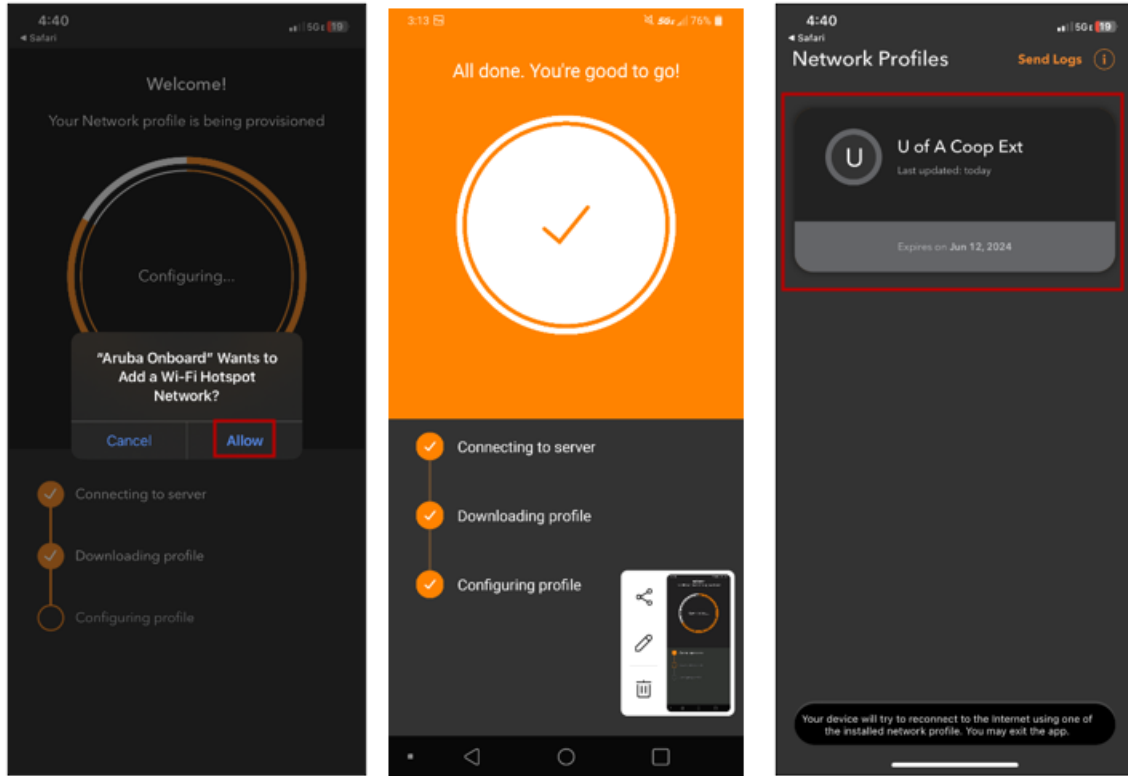
4. Return to the web browser and choose “Yes, I already have the Aruba Onboard app”.
5. Login using your UADA AD credentials (username@uada.edu and password).



1. You will now be asked to set up a Network Profile.
2. Choose "Install using Aruba Onboard app".
3. Choose "Open" to Open in Aruba Onboard.
4. The Aruba Onboard app opens, choose "Set up network profile".



5. Choose **“Allow”** when asked to add WIFI hotspot network.
6. Once your profile has been created you are done registering your device.



7. Go to your WIFI or Network Connections.
8. CES-Staff should automatically connect. You may need to choose it from the list of available networks.

If it doesn't connect and prompts for additional information, contact the [helpdesk](#) for assistance.